



2024  
CALIFORNIA DEPARTMENT OF  
TRANSPORTATION  
DISPARITY STUDY

**BBC**  
RESEARCH &  
CONSULTING



San Francisco, California

- Legal analysis
- Recommendations

**Legal Expert**

DBE/SB-certified

**BBC**  
RESEARCH &  
CONSULTING

DENVER, CO

- Management
- Community outreach
- Data collection
- Utilization analysis
- Availability analysis
- Disparity analysis
- Marketplace analysis
- Anecdotal evidence
- Recommendations
- Reporting

**PRIME CONSULTANT**



Calabasas, California

- Availability surveys
- Utilization surveys

**Survey Expert**

**G|CAP**  
SERVICES

Costa Mesa, California

- Program review
- In-depth interviews

**Program Expert**

DBE/SB-certified



COMPLIANCE SERVICES

Culver City, California

- In-depth interviews
- Community engagement

**Engagement Expert**

DBE/SBE-certified





VALUE &  
OBJECTIVES

KEY TASKS

STUDY  
TIMELINE

QUESTIONS



# VALUE & OBJECTIVES

- Assess **disparities** between **participation** and **availability**
- Assess **marketplace barriers**
- Recommend **refinements**
- Refine implementation of **Federal DBE Program**



# VALUE & OBJECTIVES

- Provide evidence of **barriers**
- Inform **remedial** efforts
- Ensure **constitutionality**



# KEY TASKS



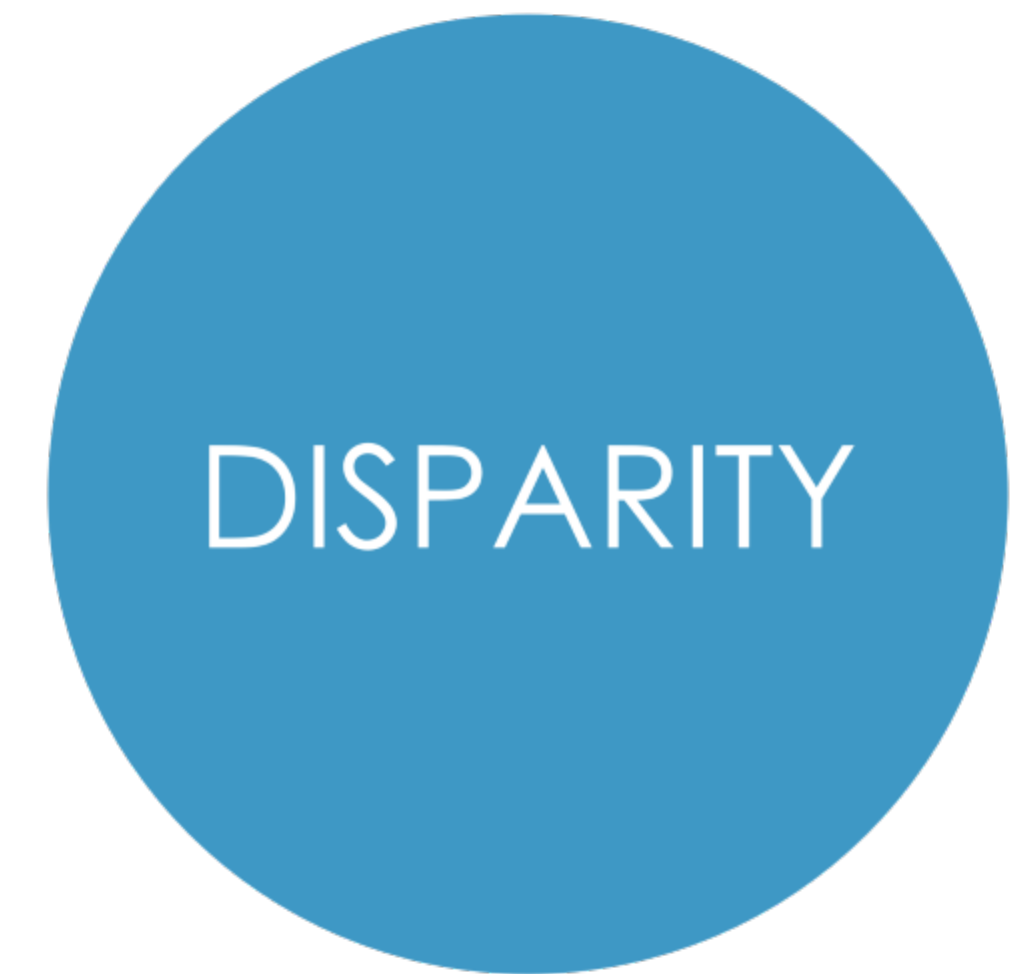
COMMUNITY  
ENGAGEMENT



AVAILABILITY



UTILIZATION



DISPARITY

# COMMUNITY ENGAGEMENT

**BBC**  
RESEARCH &  
CONSULTING

**DAVIS**  
RESEARCH LLC

**OPPORTUNITY  
MARKETING  
GROUP, INC.**  
COMPLIANCE SERVICES

**G|CAP**  
SERVICES

## Informational Efforts

- Webpage/email
- Task notices
- Presentations
- Public meetings

## Engagement Efforts

- Business surveys
- Interviews
- Focus groups



# UTILIZATION

## CALTRANS DATA

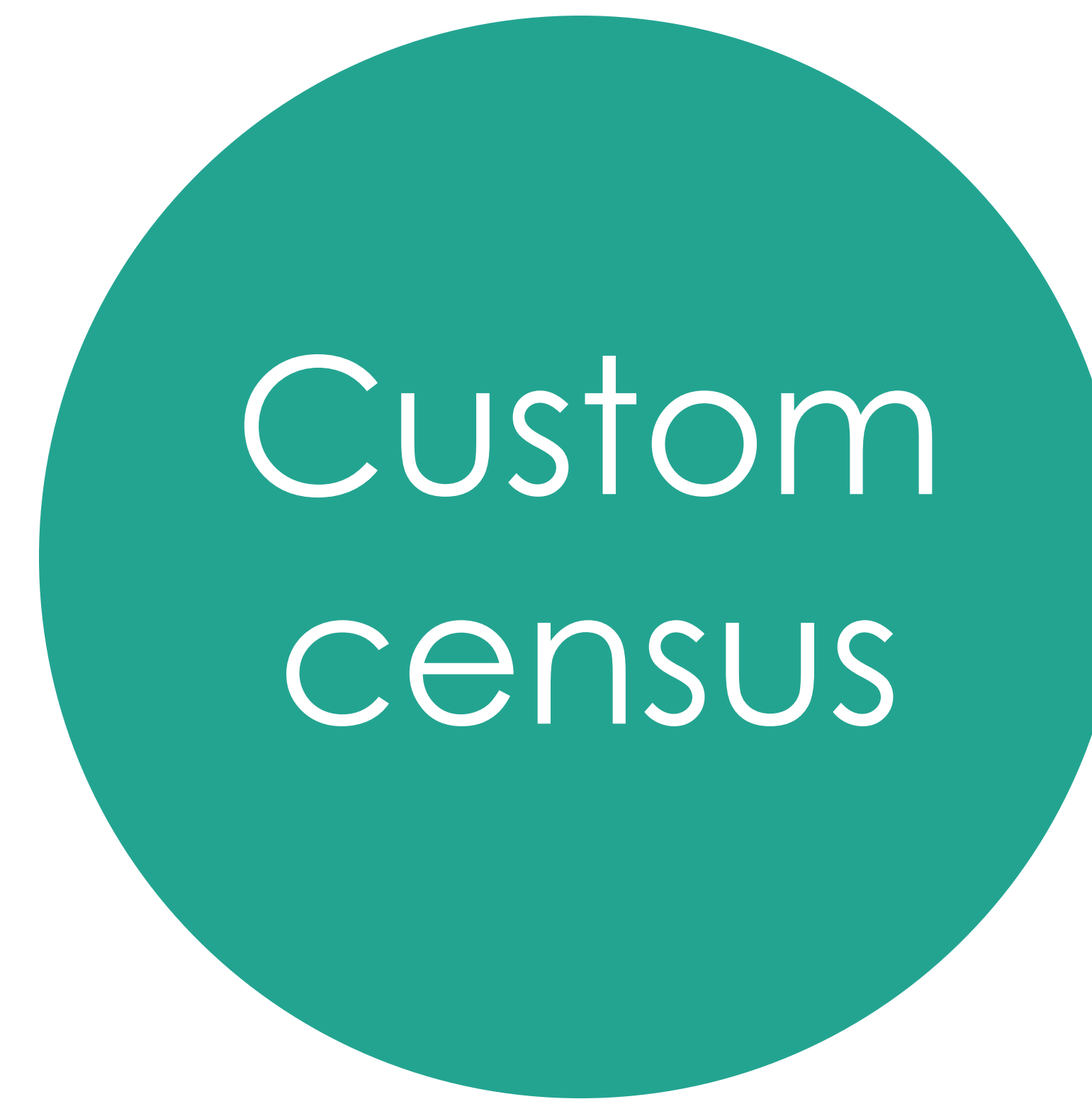
- Construction, professional services
- Prime and subcontracts
- January 1, 2020 – December 31, 2023

## SURVEY DATA

- Lines of work
- Business size
- Geography
- Ownership

**POC-and woman-owned business participation**





- Lines of work
- Vendor role
- Business size
- Geography
- Capacity
- Interest
- Ownership

**POC-and woman-owned business availability**

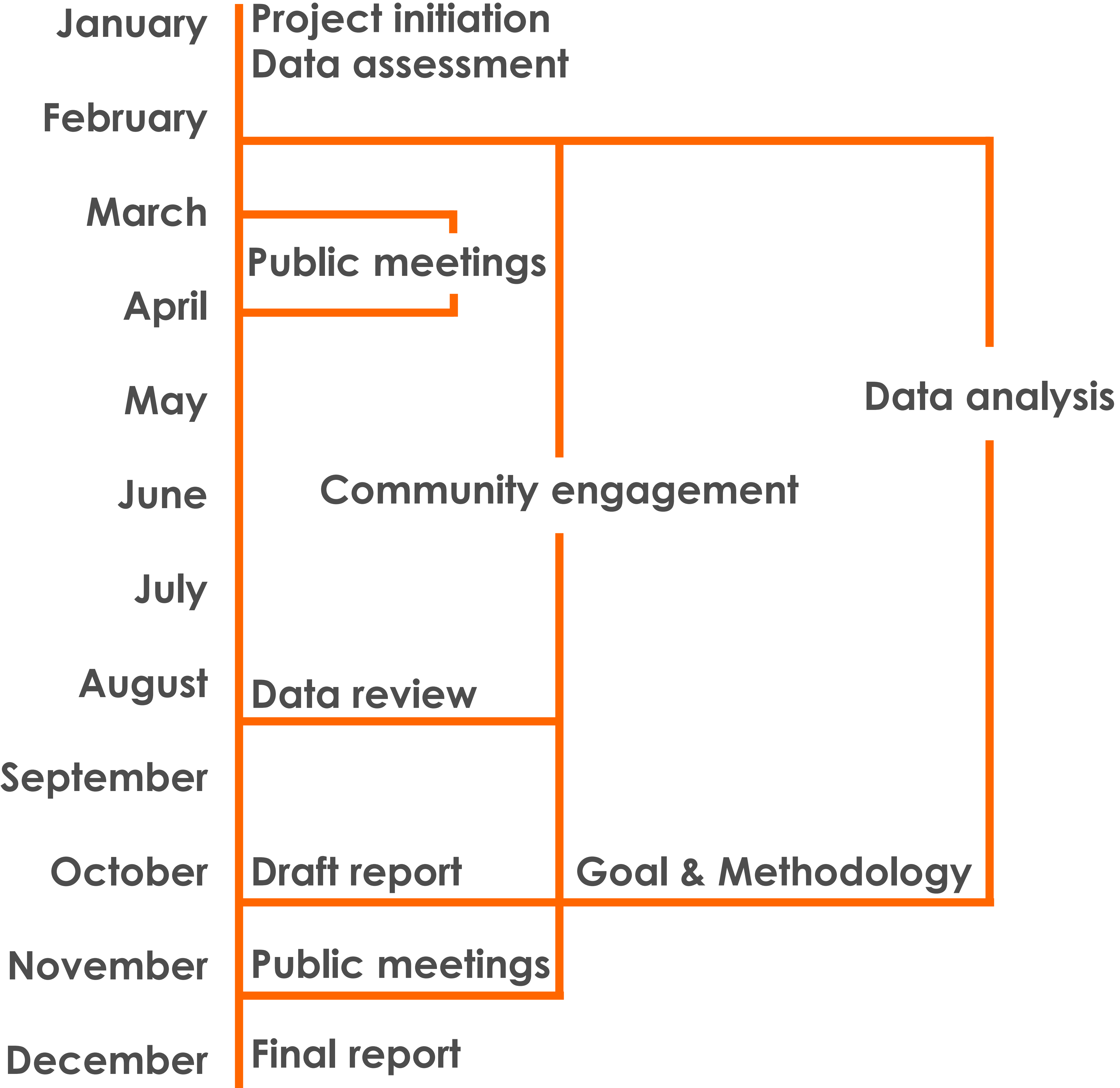


# DISPARITY

$$\frac{\text{Dollars awarded}}{\text{Dollars available}} \times 100 = \text{Disparity Index}$$

< 80 = **substantial** disparity

# STUDY TIMELINE







QUESTIONS